

## CONFIDENTIAL FEEDBACK REPORT

### COMPANY DETAILS

Company	Rio Tinto
Sector	Mining
Economic Group	Basic Materials

This Feedback Report presents the results of your participation in the 10<sup>th</sup> Environment Index and will enable you to benchmark your company's performance against other companies in your Sector and the overall universe of Index participants.

The report is split into three sections:

**Part I - Top Level Results** (this page) provides a headline of your company's overall Index performance, position relative to the sector and trend information;

**Part II - Overall Section** (page 2) summarises your management and performance scores, broken down by topic and issue;

**Part III - Detailed Breakdown** (pages 3 - 6) includes detailed results on each Index question.

Should you require a more in-depth analysis please contact us at: [isabela.souza@bitc.org.uk](mailto:isabela.souza@bitc.org.uk) or 020 7566 8702.

### INDEX MODEL

The Environment Index assesses the extent to which organisations integrate environmental responsibility into their different business functions. The relative % weighting given to each section on the overall score is shown below.

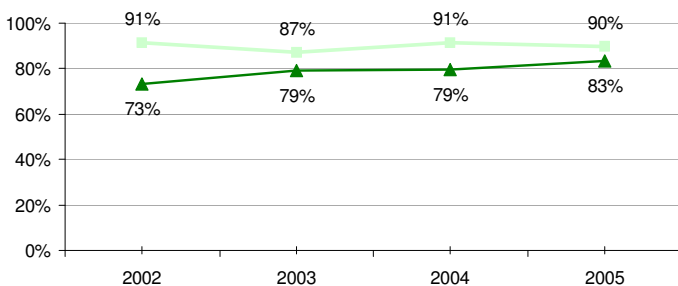
SECTION	WEIGHTING
<b>Section 1 - Management</b>	<b>45%</b>
Key Issues & Risk Assessment	3.6%
Leadership & Policy	6.9%
Objectives & Targets	6.9%
Employee Training & Stakeholder Communications	6.9%
EMS & Audit	6.9%
Supplier Programme	6.9%
Environmental Stewardship	6.9%
<b>Section 2 - Performance and Impact</b>	<b>45%</b>
Climate Change	15%
Waste & Resource Management	15%
Self-selected Impact Area	15%
<b>Section 3 - Assurance</b>	<b>10%</b>
Assurance Processes	5%
Willingness to Disclose	5%

### PART I - TOP LEVEL RESULTS

	2002	2003	2004	2005
<b>Overall Score</b>	<b>91.22%</b>	<b>87.42%</b>	<b>91.24%</b>	<b>89.82%</b>
Sector Rank	1 / 4	2 / 4	2 / 4	3 / 4
Economic Group Rank	3 / 8	4 / 9	3 / 9	5 / 12
Overall Index Rank	47 / 207	59 / 176	= 38 / 168	51 / 145

**NB:** When comparing yearly results, it should be kept in mind that some Index questions are updated annually to challenge continuous improvement.

Annual Trend - Overall Score

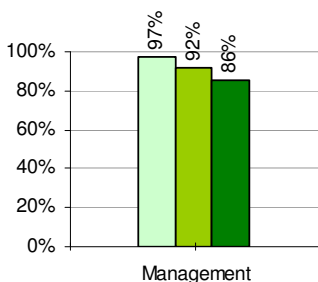


#### Sector Ranking

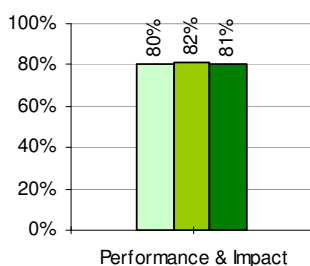
1. BHP Billiton
2. Anglo American
3. Rio Tinto
4. Lonmin
- 5.
- 6.
- 7.
- 8.
- 9.
- 10.
- 11.
- 12.
- 13.
- 14.
- 15.

### 2005 TOP LEVEL RESULTS

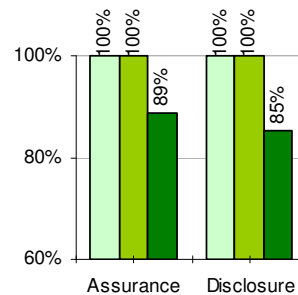
#### Section 1



#### Section 2



#### Section 3



**Key:**

- Company
- Sector
- Overall Index